

PARALLEL COG SUPPORT

THE PARALLEL COG SUPPORT

is designed for installation of panel antennas and other common telecom equipment such as RRU, TMA etc.

FLEXIBILITY

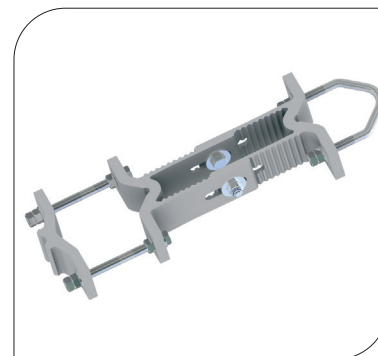
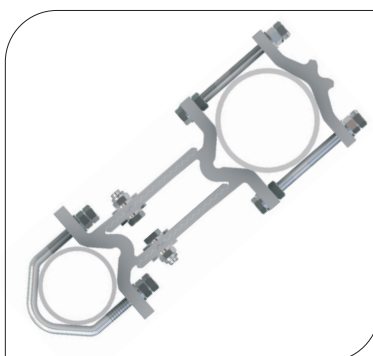
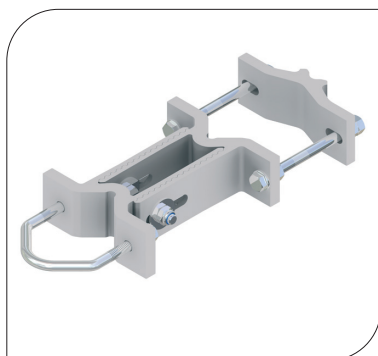
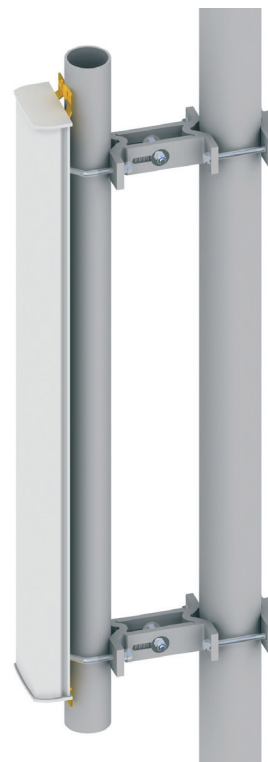
The Parallel Cog support has an off set between 205 mm (8 in) and 300 mm (11,8 in) and can handle a wide range of all common frame leg designs such as round, square, angle etc.

QUALITY

All components are made of anodized aluminium and stainless steel which gives the support excellent corrosion resistance.

EASY ASSEMBLY

The choice of materials makes the product very light which makes the handling and installation very easy.



ORDER AND TECHNICAL INFORMATION

DRAWING NO: CD 990601

FUNCTION DESCRIPTION: Parallel support kit in two levels with an off set between 205 mm (8 in) and 300 mm (11,8 in) for installation of panel antennas or other common telecom equipment such as RRU, TMA etc.

MOUNTING SPAN:

TUBES:



SQUARE PROFILES:



90° ANGLE:



60° ANGLE:



Minimum

Ø25 mm (1,0 in)

35 x 35 mm (1,4 x 1,4 in)

35 x 35 mm (1,4 x 1,4 in)

40 mm (1,6 in) opening

Maximum

Ø120 mm (4,7 in)

90 x 90 mm (3,5 x 3,5 in)

90 x 90 mm (3,5 x 3,5 in)

100 mm (4,0 in) opening

Mounting tubes

Ø60-90 mm (2,4-3,5 in)

PACKAGE DIMENSIONS:

LENGTH:

285 mm (11 in)

WIDTH:

186 mm (7,3 in)

HEIGHT:

144 mm (5,7 in)

WEIGHT:

6,0 kg (13,2 lb)

NOTE! Mounting tubes are not included. Must be ordered separately

Quality Design